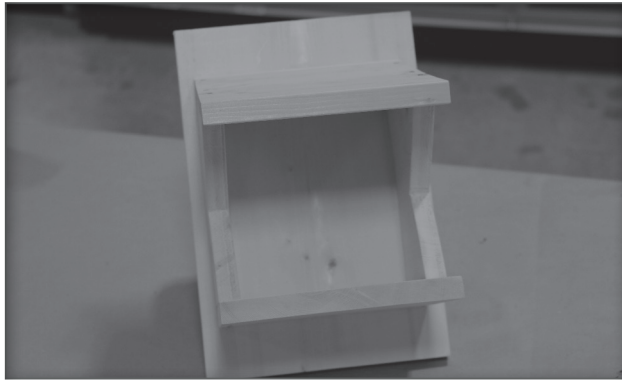


# ROBIN PLATFORM



## MATERIALS

- 1x10 13½" Fir (1) (back)
- 1x10 7x8" Fir (1) (floor)
- 1x10 8x8½" Fir (1) (roof)  
(18½° angle along one 8" edge)
- 1x10 8" Fir (2) (sides)
- 1½" finish nails (16)
- Wood Glue
- Paint

## ASSEMBLY TOOLS

- Hammer
- Tape measure
- Pencil
- Drill
- Paint brush or foam brush





AND

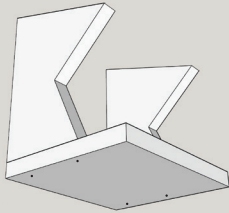
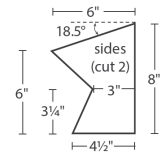
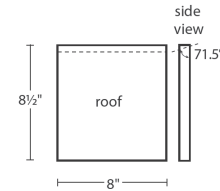
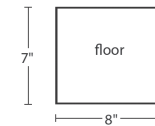
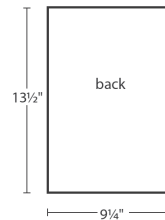
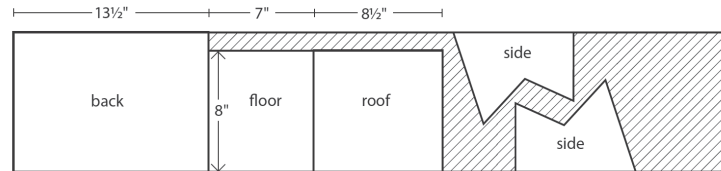
  

[www.enerstructa.com](http://www.enerstructa.com)

## NOTE:

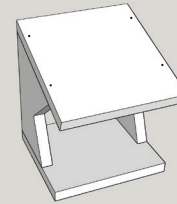
This project can be made using one 1" x 10" x 4' Fir board. See the diagrams to the right for measurements and cutting plans.

Lumber: 1" x 10" x 4'



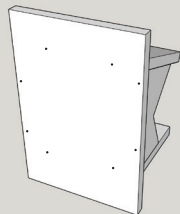
### STEP ONE

Predrill holes and attach the 7x8" floor piece to the two side pieces with glue and four nails.



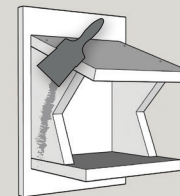
### STEP TWO

Predrill holes and attach the 8x8½" roof piece to the side pieces with glue and four nails.



### STEP THREE

Center the top of the roof 2" from the top of the back piece. Predrill holes and attach the 13½" 1x10" back piece with glue and eight nails.



### STEP FOUR

Paint your new robin platform and it is ready to install outside!

Tip: Different wall/surface materials require different types of fasteners. Use fasteners suitable for your walls/surfaces.

## NOTES:

---



---



---



---