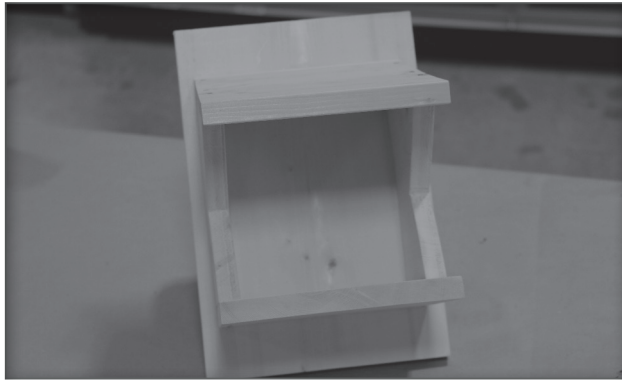


ROBIN PLATFORM



MATERIALS

- 1x10 13½" Fir (1) (back)
- 1x10 7x8" Fir (1) (floor)
- 1x10 8x8½" Fir (1) (roof)
(18½° angle along one 8" edge)
- 1x10 8" Fir (2) (sides)
- 1½" finish nails (16)
- Wood Glue
- Paint

ASSEMBLY TOOLS

- Hammer
- Tape measure
- Pencil
- Drill
- Paint brush or foam brush








AND

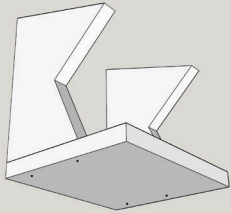
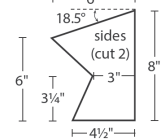
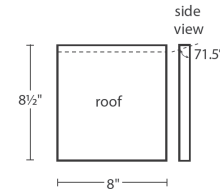
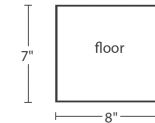
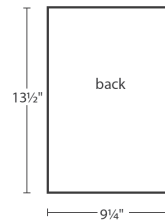
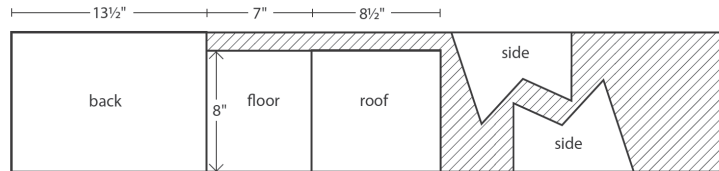


www.enerstructa.com

NOTE:

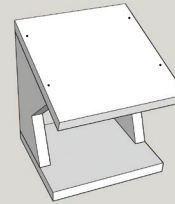
This project can be made using one 1" x 10" x 4' Fir board. See the diagrams to the right for measurements and cutting plans.

Lumber: 1" x 10" x 4'



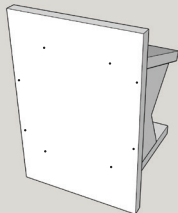
STEP ONE

Pre-drill holes and attach the 7x8" floor piece to the two side pieces with glue and four nails.



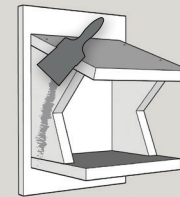
STEP TWO

Pre-drill holes and attach the 8x8½" roof piece to the side pieces with glue and four nails.



STEP THREE

Center the top of the roof 2" from the top of the back piece. Pre-drill holes and attach the 13½" 1x10" back piece with glue and eight nails.



STEP FOUR

Paint your new robin platform and it is ready to install outside!

Tip: Different wall/surface materials require different types of fasteners. Use fasteners suitable for your walls/surfaces.

NOTES:
